

eX712 Tech-Note

HMI 12" TFT, 1920x720, Touch, 8 GB Flash, 3x Ethernet, JMobile runtime

- Resolution 1920x720 (24:9)
- Ideal for presenting multiple context on screen
- Full JMobile compatibility



Highlights

Suitable for landscape and portrait operation.

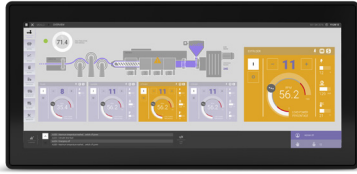
eX700 Series HMI products combine state-of-the-art connectivity features and top performance in a great design. Products have been designed as IoT edge devices with the combination of a powerful controller with networking capability and outstanding communication options including client/server OPC UA. They are the ideal choice for all demanding IoT edge applications in factory, marine and building automation.

The glass projected capacitive touchscreen and the brilliant 12,3" widescreen display with resolution of 1920x720 guarantee great optical performance; with the support of multitouch gesture programming they can create the most natural human interfaces.

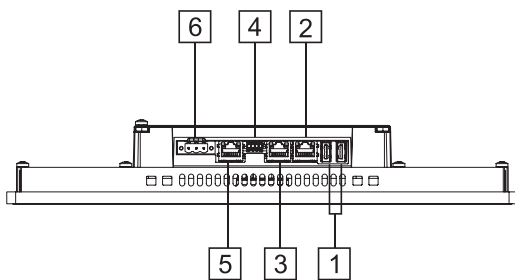
eX700 Series HMI products have been designed to run the JMobile software.

- JMobile runtime included
- Requires JMobile V4.0 or higher
- Supports Corvina Cloud secure connectivity with full network separation
- OPC UA Server and Client
- Optional CODESYS V3 runtime with choice of EtherCAT, Profinet, Ethernet IP and Powerlink

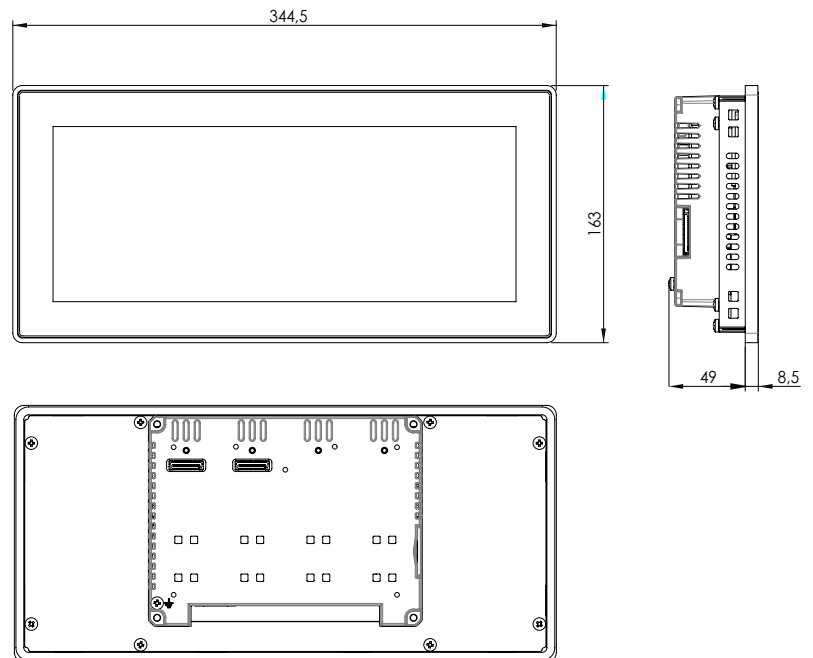
eX712 - Technical Data



System Resources	
Display - Colors	12,3" TFT LED - 16M
Resolution	1920x720, HD
Brightness	600 Cd/m ² typ.
Dimming	to 0%
Touchscreen	True Glass Projected Capacitive, Multitouch
CPU	32-bit RISC quad core - 800MHz
Operating System	Linux RT
Flash	8 GB
RAM	2 GB
RT-Clock, RTCBack-up, Buzzer	Yes
Interface	
Ethernet port	3 (port 0 - 10/100/1000, port 1 - 10/100, port 2 - 10/100)
USB port	2 (Host V2.0, max. 500 mA)
Serial port	1 (RS-232, RS-485, RS-422, software configurable) Max 3 serial ports using plug-in modules.
SD card	Yes
Expansion	2 slot for plug in modules
Ratings	
Power supply	24 Vdc (10 to 32 Vdc)
Current Consumption	1.1 A at 24 Vdc (max.)
Input Protection	Electronic
Battery	Rechargeable Lithium battery, not user-replaceable
Environment Conditions	
Operating Temperature	-20° to +60 °C (vertical installation). Plug-in modules and USB devices may limit max temperature to +50 °C
Storage Temp	-20°C to +70°C
Operating / Storage Humidity	5-85% RH, non condensing
Protection Class	IP66 (front), IP20 (rear) - Type: 12, 4X
Dimensions and Weights	
Faceplate LxH	344.5x163 mm (13.56x6.41")
Cutout AxB	332.5x152 mm (13.09x5.94")
Depth D+T	49+8.5 mm
Weight	1.8 Kg
Approvals	
CE	Electromagnetic Compatibility Directive 2014/30/EU (EMC)
ATEX	Zone 2/22: II 3 G Ex ec IIC T5...T4 Gc, II 3 D Ex tc IIIC T95°C Dc
IECEX	Zone 2/22: Ex ec IIC T5...T4 Gc, Ex tc IIIC T95°C Dc
UL	cULus: UL61010-1 / UL61010-2-201
UL	cULus: Class 1 Div 2
DNV-GL	Yes
RCM	Yes



- 1 USB ports 1 and 2
- 2 Ethernet port 2 (10/100 Mb)
- 3 Ethernet port 1 (10/100 Mb)
- 4 Serial port
- 5 Ethernet port 0 (10/100/1000 Mb)
- 6 Power supply



Ordering Information

Model	Part Number	Description
eX712	+EX712U5P1	HMI 12.3" TFT 1920x720, PCAP Touchscreen, 8 GB Flash memory, 3x Ethernet ports, JMobile runtime